

20 Tapanui School Newsletter

Newsletter #30 - 14 November 2024

24

Assembly Awards

Values and Critical Capabilities

Asha Leng - Actively Involved
McKenna Chambers-Duncan - Confident
Harper Smtih - Actively Involved
Leanna Navarro - Confident
Brooklyn Templeton - Connected
RJ Beneke - Confident
Owen Masunu - Actively Involved
Austin Lavender - Confident
Ashidhi Arachchillage - Excellence
Kaius Duncan - Respect
Henry Armishaw-Blanc - Life Long Learner
Ayla Aitken - Excellence

Spelling Bee Competition

Riley Collard - Participation
Portia Dono - Participation
Koby Joyce - Participation
David Daianu - Participation
Leanna Navarro - Participation
McKenna Chambers-Duncan - Participation
Oliver Ross - Participation
Isabel Yandug - Achieved

Congratulations to you all!

Tapanui School

Newsletter #30 - 14 November 2024

Kia ora whānau!

IMPORTANT DATES FOR TERM 4

WEEK 6

21 Nov - Y6 BMC Transition Day

WEEK 7

26 Nov - Launchpad Break up

28-29 Nov - Craft Days

WEEK 8

3 Dec - Pet Day

4 Dec - Sports Activator

6 Dec - Craft Days

5 Dec - Board Meeting

WEEK 9

9 - 12 Dec - REAP Swimming lessons

13 Dec - End of Year Prizegiving

WEEK 10

17 Dec - Final day of school

Swimming togs every day please!



COMMUNITY

Username: tapanui

Password: together

Please go online and complete this terms reviews.

As the teachers prepare for our Teacher Only Day tomorrow, I'm reminded how full our curriculum has become. For those of us who have been involved in teaching for 20+ years we have seen and experienced numerous changes to the content and ways that things are taught. Those of who who have been in Tapanui for 20+ years may remember Mr Doug Dixey who was the principal here at Tapanui School when I first arrived in 1997. Doug passed away last Sunday. I remember Doug as a passionate principal - not often in his office (more likely out teaching PE or in the classroom) and always trying to look for ways to make teaching simpler for teachers and straight forward for children. The expectations were clear and teachers moved very methodically from one task to the next. Covering the curriculum was doable with assessment to show progress (including the good old PAT's that I'm sure NZ adults remember from their own school days!) Teaching seemed a lot simpler back then. With many changes in education and society the challenge is to keep the main thing, the main thing...and what is that? On this Thursday afternoon, I want to suggest that the 'main thing' fits in to 3 broad areas

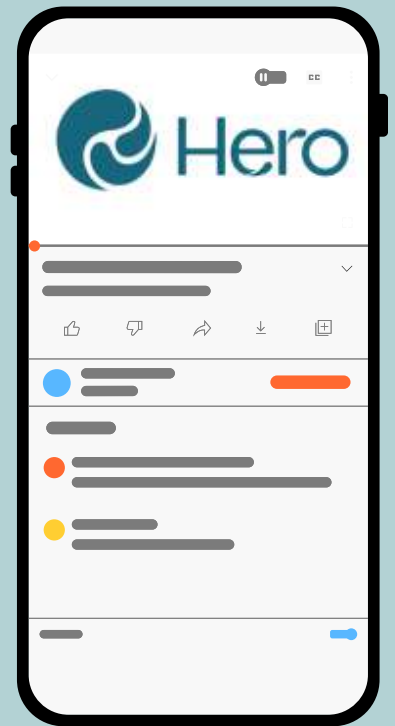
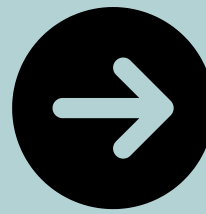
1. wellness - physically, emotionally, spiritually, mentally and relationally
2. literate and numerate
3. inquisitive, creative and critical thinkers

Thank you for trusting us here at Tapanui School to deliver a curriculum that supports each of these things as we all develop and grow in our different roles together - principal, teacher, parent, student!

Ngā mihi, Jane

Fondly remembering Doug Dixey - past principal of Tapanui School.

Have you downloaded the Hero app yet? Do it NOW!



Download the Hero by LINC-ED app from the app store/play store.

Note: use the keywords Hero LINC-ED when searching for the app.

Remember to use the email address you have given the school when you log in

Well done to all those parents who have commented, liked or used the app already for putting in an absence!

There was a little competition when the news and reminders went out last Friday on Hero. Those who read the notice to the end would have noticed the opportunity to go in the draw to win a Benger-nui voucher by commenting with their name. We had 9 entries and the winner was drawn by an online random name selector at assembly this afternoon. The winner was...

Jessie Rey Navarro!

Get the app downloaded onto your phone and you just might come across another chance to win before the year's out!



CRAFT DAY it's getting closer!

28, 29 November and 6 December

Craft Day is getting closer and I'm pleased to say that we have got enough helpers!! Thank you so much for making time over this busy season to come and support this programme in our school. The PTA are putting on morning tea and lunch for all the helpers so if you think this is something you can help with, please get in touch with Vanessa Stewart who is co-ordinating this.





It was great to walk around some of the classrooms today to see some different writing tasks going on - some intentional teaching, some practice, some supported learning and independent work on both paper and digital platforms. Ka pai koutou!



The Year 5/6 class have been learning about structuring a paragraph...here is one completed example explaining why West Otago is a great place to live...

West Otago is a great place to live. We have the best dairy where we can buy delicious hot chips and a fantastic supermarket where we can buy food without waiting in long queues. We also have great parks and a fantastic swimming pool which is great to cool off in on hot days. Our community has lots of caring people who love to help other people. We have an awesome fire station who help us, and put out fires.

I will never leave West Otago EVER!

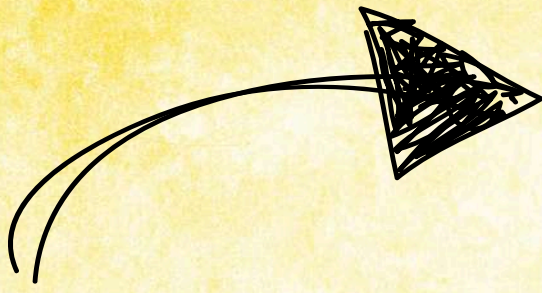
By Riley C



**Working
Bee
Fun**

**Thanks
for
turning
up!**

Teacher Only Day



**Friday 15 November
School is closed**

Thank you for making alternative arrangements for your children tomorrow. The staff will be busy delving into the new English curriculum tomorrow. See all the children back on Monday!

WAKA CHALLENGE

The latest Waka Wero (Challenge) happened on Wednesday this week - organised by Waka Kowhai (Yellow). It was a much loved and anticipated Tug-o-war! It was a beautiful day with a lot of positive competition and fabulous sportsmanship. Unfortunately there could only be one winner...



And the winner was

waka kowhai



The Year 6 Waipahi Wetlands Trip

as orally reported by Isabel and Bella at assembly.

We are reporting about the YR 6's trip to the Waipahi Wetlands. There were a few different schools there. Some from the Clutha area and one all the way from Bluff. We had to go to different stations. First, we went to the Habitat Station and learned about how to help Whitebait and their habitat. Then, on the second station, we went to the Harakeke Station where we weaved flowers out of Harakeke/Flax. Here are some of the flowers.



The next station was finding out what lives in the water. We saw longfin and shortfin eels and we learnt how to tell them apart. Longfin eels have their fin more than halfway up their back and their skin is much more wrinkled.



The next station is where we learned about Maori history and how they used the wetlands. One interesting fact is that obsidian doesn't appear naturally in the South Island, but obsidian was found on a beach near Kaka Point. It could have been used by Maori living near the area as it had a sharp edge which would be good for scraping and cutting.



After all of the stations, we finally got to do some planting which was really fun. We planted three different types of plants: flax, tussocks and Mingimingi because they all like growing in wet areas. After that we put some mulch around some plants because it helps the smaller plants fight against the grass.



We had a great day and learned a lot.

